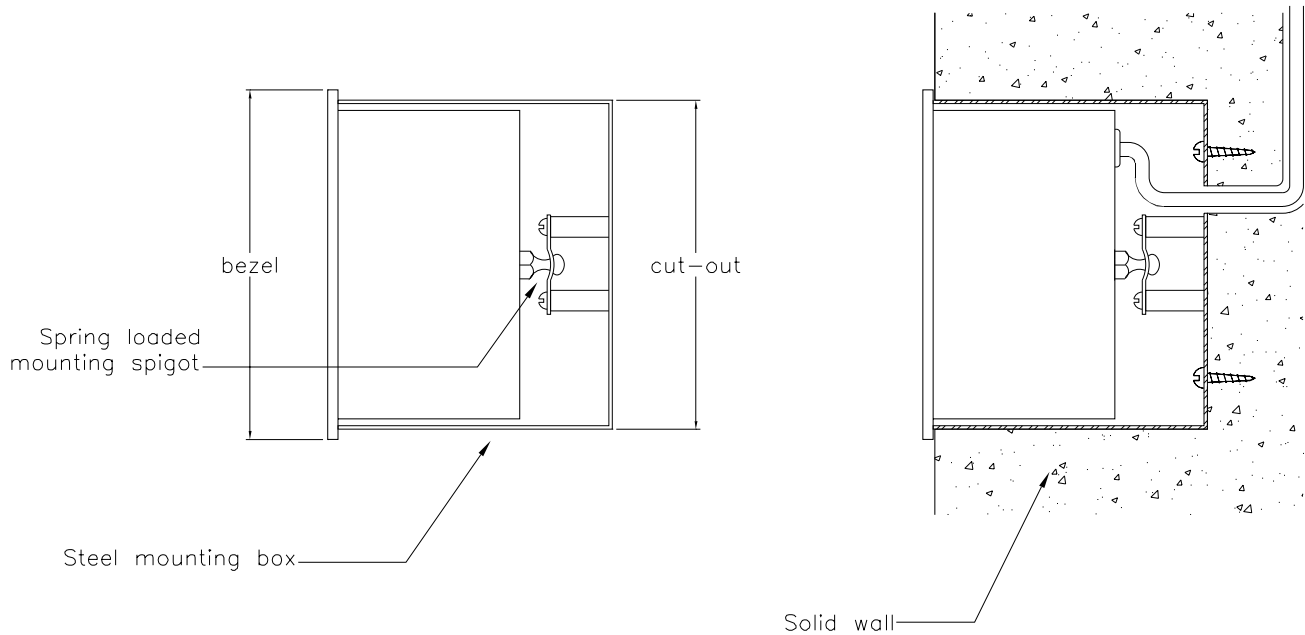




**Mounting Details of Solid Wall Flush
 Mounting with Back-box cases**

FB type flush mounting clocks are supplied with a steel back box designed to be fitted in a solid wall. The clock is secured in the box by rear retaining brackets, as shown in the drawing below.



The tables below list the required wall cut-out size to house the steel mounting box, along with basic dimensions for our range of FB flush solid wall mounting multi-zone clocks. Please contact our technical department if the product you are interested in is not listed.

Clock	Front bezel size Width x Height	Minimum wall cut-out Width x Height	Depth of mounting box
401A.05.FB	317 x 102mm (12.4 x 4.0")	311 x 96mm (12.2 x 3.8")	80mm (3.1")
401A.057.FB	402 x 102mm (15.8 x 4.0")	396 x 96mm (15.6 x 3.8")	80mm (3.1")
401A.100.FB	682 x 192mm (26.9 x 7.6")	676 x 186mm (26.6 x 7.3")	80mm (3.1")
401A.12.FB	682 x 192mm (26.9 x 7.6")	676 x 186mm (26.6 x 7.3")	80mm (3.1")
420A.05.FB	252 x 102mm (9.9 x 4.0")	246 x 96mm (9.7 x 3.8")	80mm (3.1")
420A.057.FB	317 x 102mm (12.4 x 4.0")	311 x 96mm (12.2 x 3.8")	80mm (3.1")
420A.100.FB	492 x 192mm (19.4 x 7.6")	486 x 186mm (19.1 x 7.3")	80mm (3.1")
420A.12.FB	492 x 192mm (19.4 x 7.6")	486 x 186mm (19.1 x 7.3")	80mm (3.1")



Mounting Details of Solid Wall Flush
Mounting with Back-box cases cont..

Clock	Front bezel size Width x Height	Minimum wall cut-out Width x Height	Depth of mounting box
450A.05.FB	562 x 102mm (22.1 x 4.0")	556 x 96mm (21.9 x 3.8")	80mm (3.1")
450A.12.FB	1462 x 192mm (57.6 x 7.6")	1456 x 186mm (57.3 x 7.3")	80mm (3.1")
451A.05.FB	562 x 102mm (22.1 x 4.0")	556 x 96mm (21.9 x 3.8")	80mm (3.1")
452A.05.FB	492 x 192mm (19.4 x 7.6")	486 x 186mm (19.1 x 7.3")	80mm (3.1")
452A.12.FB	952 x 412mm (37.5 x 16.2")	946 x 406mm (37.2 x 16.0")	80mm (3.1")
453A.05.FB	492 x 192mm (19.4 x 7.6")	486 x 186mm (19.1 x 7.3")	80mm (3.1")
453A.12.FB	952 x 412mm (37.5 x 16.2")	946 x 406mm (37.2 x 16.0")	80mm (3.1")
454A.05.FB	312 x 312mm (12.3 x 12.3")	306 x 306mm (12.0 x 12.0")	80mm (3.1")
454A.12.FB	612 x 612mm (24.1 x 24.1")	606 x 606mm (23.9 x 23.9")	80mm (3.1")
455A.057.FB	462 x 252mm (18.2 x 9.9")	456 x 246mm (18.0 x 9.7")	80mm (3.1")
455A.100.FB	812 x 432mm (32.0 x 17.0")	806 x 426mm (31.7 x 16.8")	80mm (3.1")
458A.057.FB	462 x 252mm (18.2 x 9.9")	456 x 246mm (18.0 x 9.7")	80mm (3.1")
459A.05.FB	492 x 192mm (19.4 x 7.6")	486 x 186mm (19.1 x 7.3")	80mm (3.1")
460A.05.FB	472 x 102mm (18.6 x 4.0")	466 x 96mm (18.3 x 3.8")	80mm (3.1")
460A.12.FB	1142 x 192mm (45.0 x 7.6")	1136 x 186mm (44.7 x 7.3")	80mm (3.1")
467A.05.FB	472 x 102mm (18.6 x 4.0")	466 x 96mm (18.3 x 3.8")	80mm (3.1")
490A.02.FB	156 x 156mm (6.1 x 6.1")	150 x 150mm (5.9 x 5.9")	80mm (3.1")
490A.05.FB	312 x 312mm (12.3 x 12.3")	306 x 306mm (12.0 x 12.0")	80mm (3.1")

Wharton Electronics Ltd

Unit 15, Thame Park Business Centre, Wenman Road, Thame, Oxfordshire, England. OX9 3XA

Technical Email: support@wharton.co.uk

WWW: <http://www.wharton.co.uk>

Telephone: +44 (0) 1844 260567 Fax: +44 (0) 1844 218855